

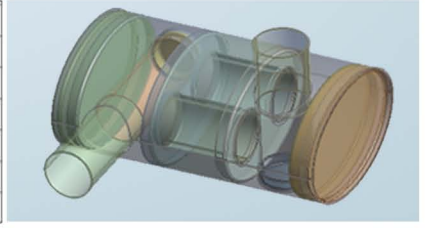
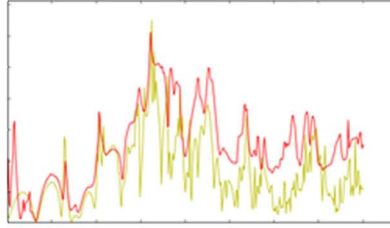


**FIGES**  
engineering

## AKUSTİK

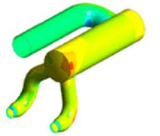
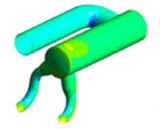
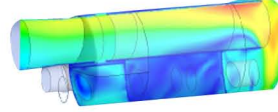
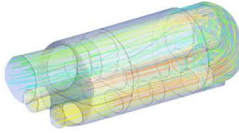
- SUSTURUCU VE REZONATÖRLER İÇİN İLETİM KAYBI HESABININ SONLU ELEMANLAR YÖNTEMİ İLE HESAPLANMASI

*Transmission loss calculations of mufflers.*



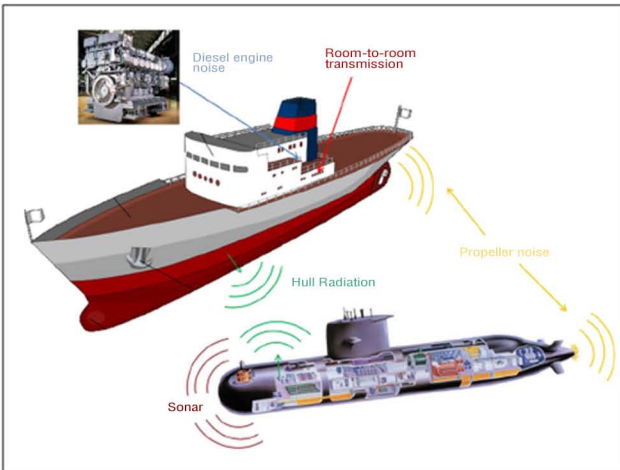
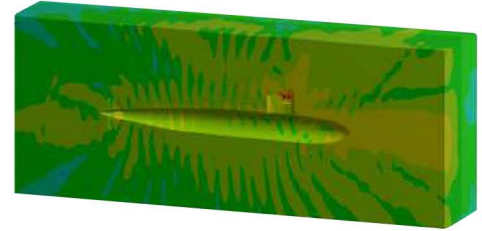
- GERİ BASINÇ KRİTERLERİNDE DİZEL MAKİNELER İÇİN EGZOZ SİSTEMLERİNİN TASARLANMASI

*Exhaust system design with backpressure criteria for diesel engines.*



- GEMİ VE DENİZALTI LARDAN SU ALTINA YAYILAN GÜRÜLTÜNÜN ALÇAK VE YÜKSEK FREKANS İÇİN MODELLENİP, HESAPLANMASI

*Underwater noise propagation problems for low and high frequency signals.*



- GEMİ İÇİNDEKİ TİTREŞİM KAYNAKLI GÜRÜLTÜ PROBLEMLERİNİN HARMONİK VE TRANSİENT OLARAK MODELLENİP, KABİN İÇİNDEKİ GÜRÜLTÜ SEVİYELERİNİN HESAP EDİLMESİ

*Structure borne noise level calculations with harmonic or transient loadings (cabin noise).*